

# Installation, Care and Use of BlackBerry® Storm & Storm2 Mount

The following units are also compatible and can be adapted to fit this mount:  
 BlackBerry® Tour 9360 • BlackBerry® Curve 8330  
 BlackBerry® Curve 8310 • BlackBerry® 8900  
 Samsung Jack • Samsung Eternity  
 LG Xenon • LG VU

**DO NOT under any circumstances operate a phone or any other portable device during the operation of your vehicle.**

Marlin got his new BlackBerry Storm and was captivated by all of its advanced features like email, movies and most importantly for the directionally challenged, turn by turn navigation. Resting this new technological marvel on the center consol of the car is a great way to view the bright full color screen, but getting on the bike and taking full advantage of this little goodie was not going to happen.

So with BlackBerry in hand Marlin set out to make a stylish and functional holder and mounting bracket that would easily attach to his motorcycle, give him the ability to clearly view the screen and give him access to all the buttons and charging/data port. So, in true Marlin fashion a clean looking, brightly polished BlackBerry Storm holder was created from a single piece of billet aluminum and made to quickly and easily attach to your motorcycles' handlebars and to swivel and rotate for the best view while riding.



Carefully remove and confirm content of package:  
 One (1) Polished Aluminum BlackBerry® Holder, One (1) 1/8" foam pad with adhesive back, One (1) set screw, Two (2) felt strips. Your unit may also include one (1) of three different sized handlebar mounts (1" & 7/8" - 1 1/4" - 1 1/2") if purchased as a set.

**STEP 1.** Begin by making sure your phone fits properly in the mount, the phone should be snug and be secure as not to easily slip out. You may obtain a secure fit in a couple of ways: 1. You may utilize the supplied foam pad and felt strips. 2. You can purchase a skin or sleeve that is form fitting to your specific phone (the rubber or silicone units work best).



1. Foam Pad



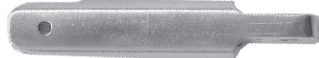
2. Phone Skin / Sleeve

This foam pad adheres to the mount, between the mount and the phone. It is suggested to dry fit the phone with the foam pad leaving the paper coating over the adhesive backing and removing the paper after you have determined the proper fit. If in the future the foam pad needs to be replaced it is recommended to clean the glue / adhesive from the mount before installing the fresh foam pad.

**STEP 2.** Once you have ensured the phone fits properly you want to fine a convenient, visible position for the mount that will not interfere with the operation of the vehicle. Placing the holder in the horizontal position you will want to ensure the slot to load the device is facing up. Mounting in the vertical direction the slot may be to either side but you will want to ensure you have access to any buttons or ports you may require. If you need to move the head of the unit away from the HBC mounting ring we manufacture an extension as shown below.

**Optional Extension**

2 1/2" extension Part # 600050 Cost \$9.95 ea.



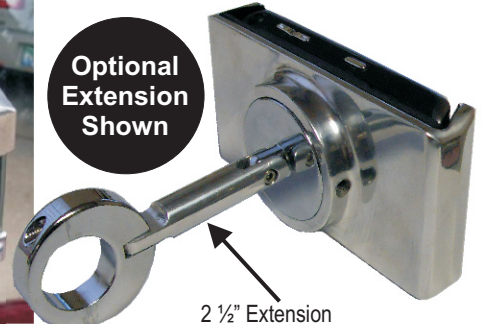
You can order this 2 1/2" extension if needed.

The 2 1/2" extension will fit between the head and the HBC clamp that attaches to the handlebar and will extend the BlackBerry mount allowing you to get more adjustment from the unit. (shown at top of next column)

BEFORE



AFTER



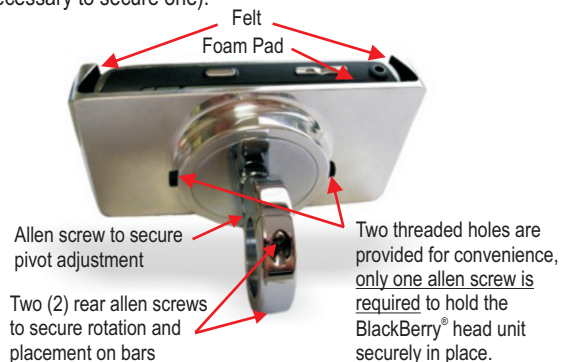
**STEP 3.** Now that you have made sure the device fits into the holder snugly and found the proper location you can start to install hardware to the vehicle. The BlackBerry head unit may be installed on a Marlin's Handlebar style clamp (shown below)(HBC) or the Bullet Billet (BBCS2) or Talon style mount. The BlackBerry unit is not suitable to be mounted on the Marlin's Brake/Clutch - Perch Clamp style (BC) mount. If you purchased the unit with an included HBC style clamp follow the directions below, if you plan on mounting the BlackBerry head to another style Marlin's mount follow the installation instructions that came with the mount to attach it to the vehicle.

**STEP 4.** Make sure that the unit or any parts do not fall and become damaged during installation.

Remove the two rear screws from the HBC style handlebar clamp, separating the two clamp halves. Place the handlebar clamp halves in the position of your choice on the bars (keep away from curves or areas the bar may not be a consistent thickness), re-insert the supplied screws and tighten gently and evenly (for the mount to tighten properly there should be a small gap between the two halves, no bar is the same so the gap will vary - DO NOT over-tighten ).

Loosen the hex screw on the round head portion (pivot adjustment) of the clamp, move it into the desired position and tighten hex screw to lock head in place.

Install BlackBerry head unit onto round portion of clamp and secure using one hex set screw (there are two holes provided for convenience but it is only necessary to secure one).



The combination of the HBC mount & BlackBerry head will allow you to adjust your phone in all directions, twisting and rotating it so that it will always face you. Once you have your device in the best position and have made all your adjustments you can lock down all the allen screws to keep it firmly in place.

\*The unit can be polished and cared for with a quality metal polish.\*

**ALL RETURNS MUST BE PACKED TO ELIMINATE DAMAGE**

**DAMAGED RETURNS WILL NOT BE ACCEPTED**



Technical support: 248-683-1536  
[www.marlinlocks.com](http://www.marlinlocks.com)